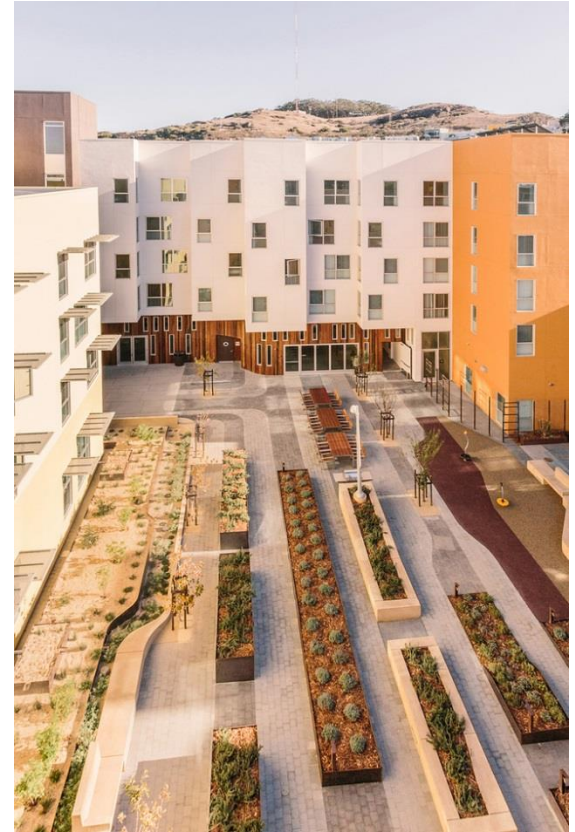


HSA Housing & Homeless Division: A Look Back

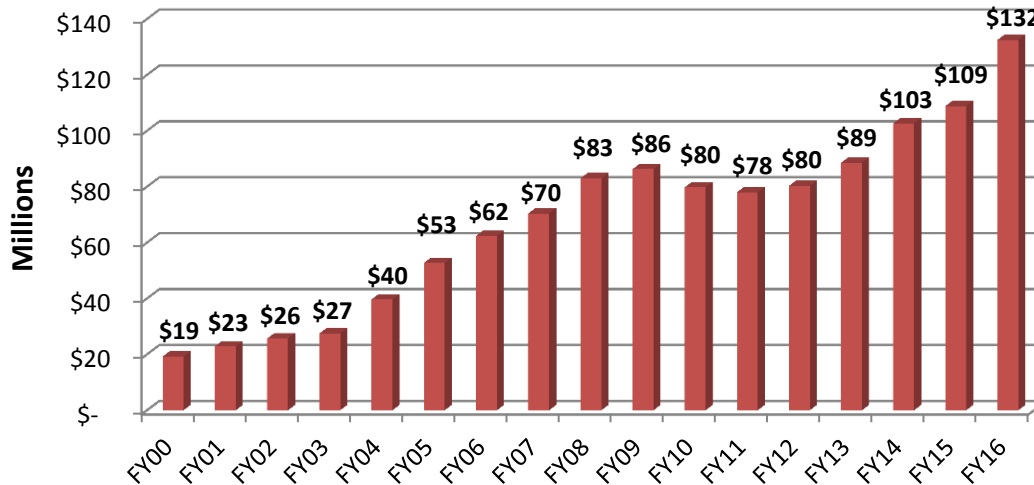


June 23, 2016

Housing & Homeless Budget

- Investment in Housing & Homeless programs grew to over \$130 million
- Annual HUD Continuum of Care award topped \$30 million

Housing & Homeless Division Budget

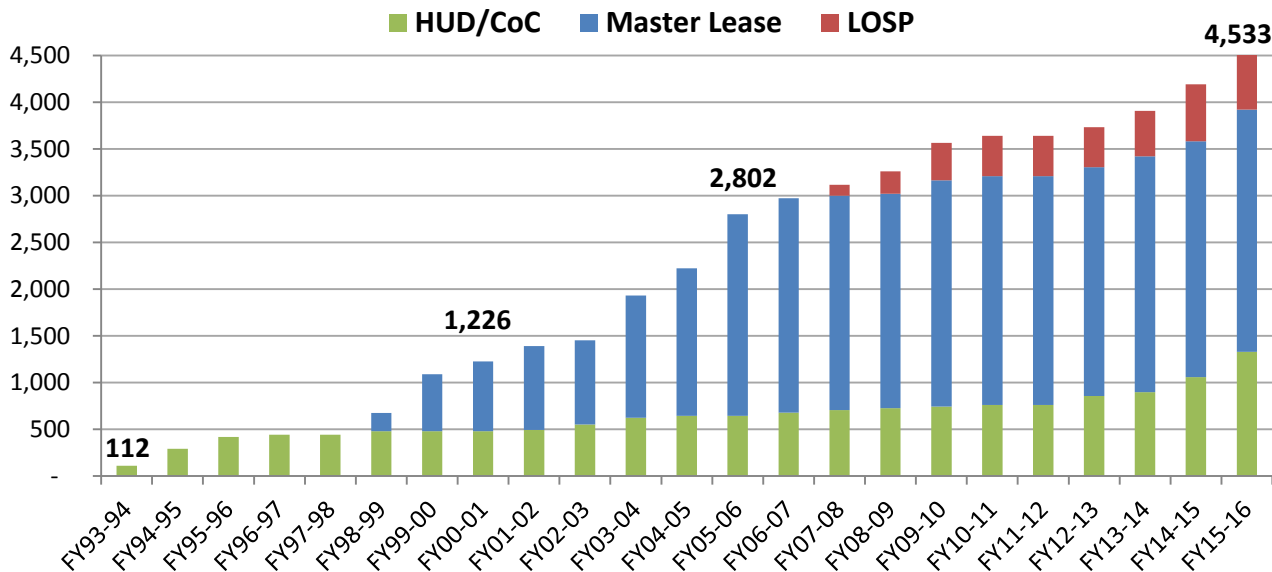


**H&H
budget
increased by
around 600%
over last
16 years!**

Permanent Supportive Housing

- San Francisco was first major city to fully embrace the concept of “housing first”
- HSA H&H Division aggressively added units to its portfolio over time
- Number of units increased by 315% over past 15 years

HSA Permanent Supportive Housing Units

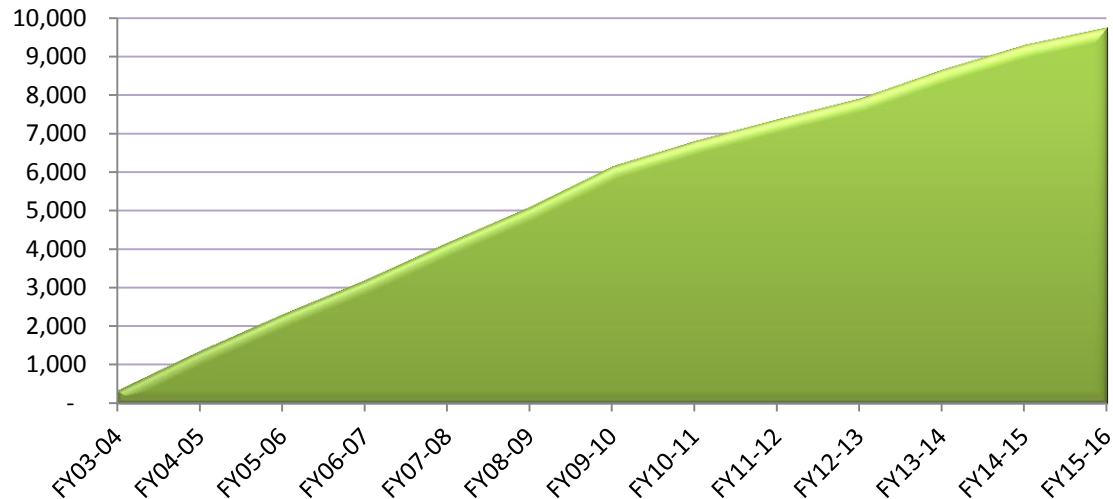


People Housed

10,000 single adults and family members placed into HSA permanent supportive housing since 2004

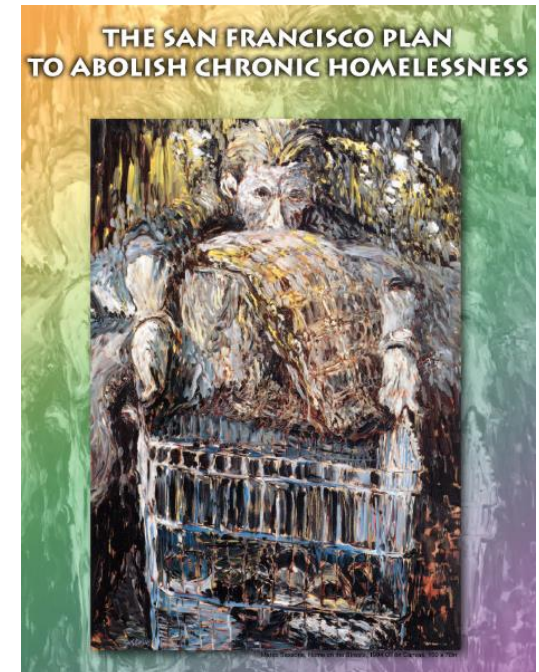
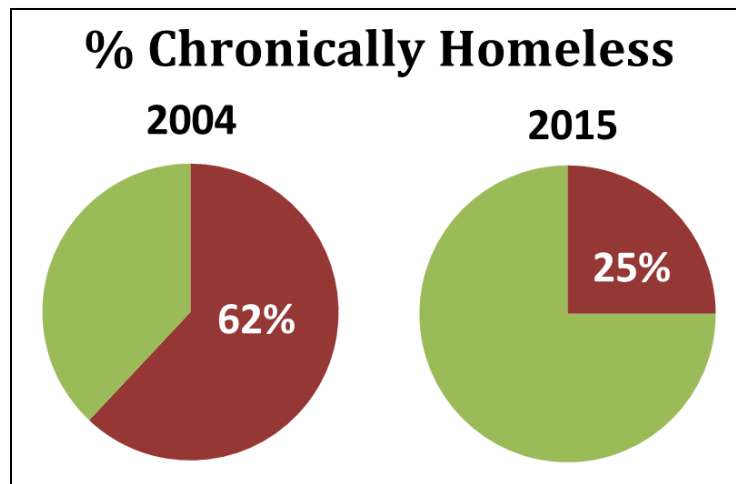


Cumulative Permanent Supportive Housing Placements



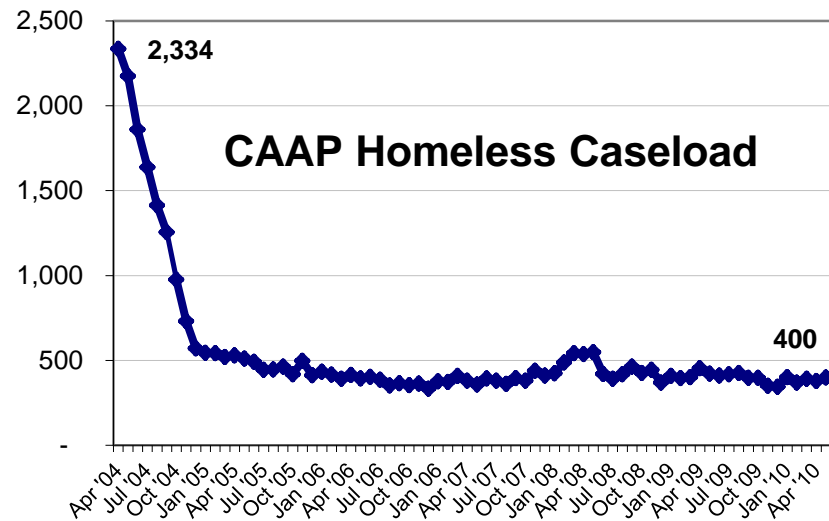
Ten Year Plan to Abolish Chronic Homelessness

- HSA oversaw implementation of the plan (2004-2014)
- City met goal of creating 3,000 new units of permanent supportive housing
- Significant decline in chronic homelessness



Care Not Cash

- Nationally recognized initiative to redirect General Funds from cash aid to housing and services
- Created around 1,300 new units of permanent supportive housing
- Housed around 4,700 single adults since 2004
- CAAP homeless caseload declined by over 80%



Partnerships

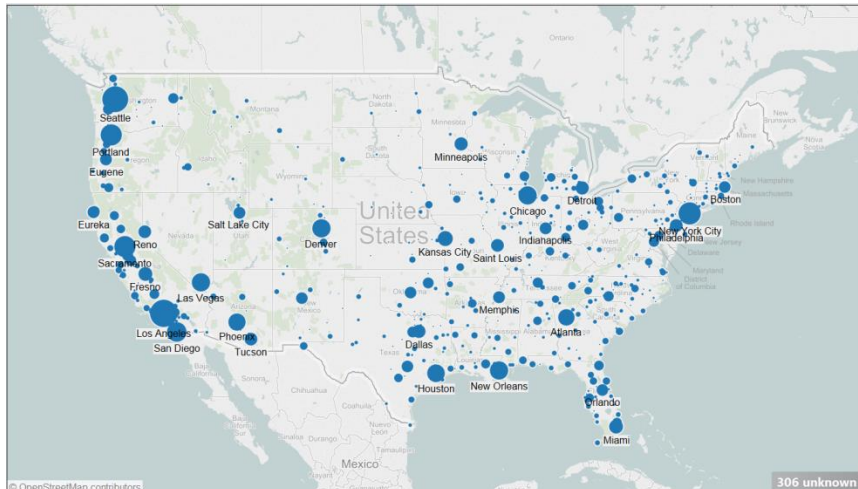
- **Mayor's Office of Housing:** Local Operating Subsidy Program
- **Housing Authority:** public housing preferences for homeless and formerly homeless clients
- **Department of Public Health:** behavioral health services access for residents of HSA permanent supportive housing
- **Mayor's Office of HOPE:** Navigation Center model
- **311 System:** shelter reservation process



H&H Division
maintains 130+
contracts with
48 community
partners

Homeward Bound

- More than **10,000** homeless persons reunited with friends or family since 2005



- Recent \$2 million in increased funding allowed H&H Division to expand staffing and outreach, and improve data collection

Homeless Point-In-Time Counts

- H&H Division oversaw HUD-mandated homeless counts every two years
- Staff worked to improve count and survey methodology over time
- Added youth count conducted by youth peers beginning in 2013



Navigation Centers

- H&H Division partnered with other agencies to open the first Navigation Center in 2015
- HSA created new placement exits for Navigation Center clients



- Currently working to add additional Navigation Centers

Homeless Prevention and Rapid Rehousing

- Tripled General Fund investment in one-time grants and rental subsidies over last five years
- Innovations in program design and expansion to new target populations over time



Homeless Families System

- **2006 Homeless Families Redesign**
 - Comprehensive community process that resulted in 19 recommendations in areas of Eviction Prevention/Rental Assistance, Emergency Shelter/Assessment and Transitional/Permanent Housing
- **2016 Family Coordinated Entry System & Redesign**
 - Includes coordinated entry and targeted delivery of services aimed at speeding flow of families from “front door” into permanent housing



Adult Emergency Shelter

- 311 shelter reservation process and coordinated waitlist for 90-day beds
- Increased year-round capacity for women
- Jazzie's Place marked the nation's first LGBTQ shelter



Vulnerable and Underserved Populations



- Permanent supportive and transitional housing for **transition age youth**
- Permanent supportive housing and shelter beds for **seniors**
- Homes for Heroes program for homeless **veterans**
- Homeless youth outreach and emergency shelter for the **LGBTQ community**

Homeless Exits

More than **23,000** homeless people in San Francisco have left the streets or shelters for permanent housing since 2004.



Thanks for the outstanding work!

