

In Home Supportive Services

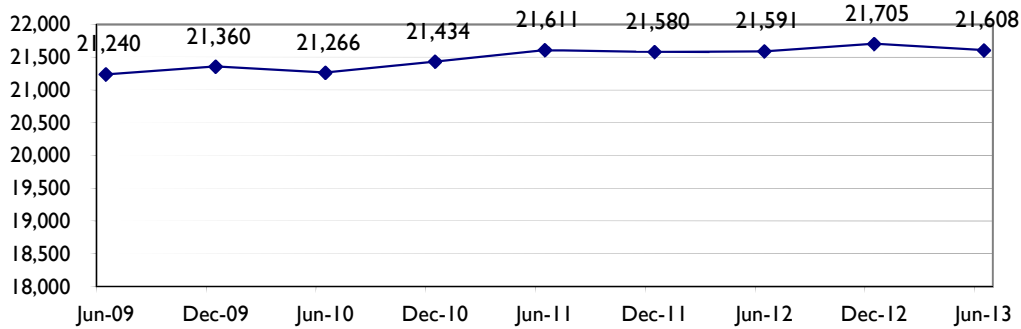
Six-Month Update

January – June 2013

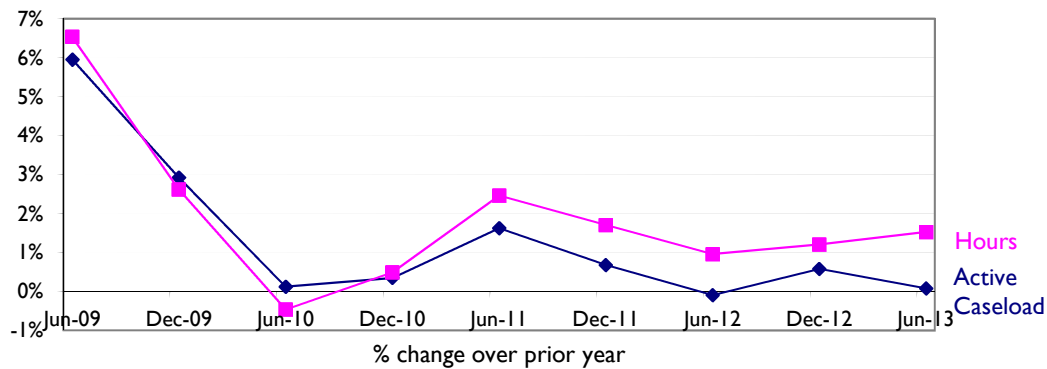
Produced by the San Francisco Human Services Agency Planning Unit

In Home Supportive Services Six-Month Update

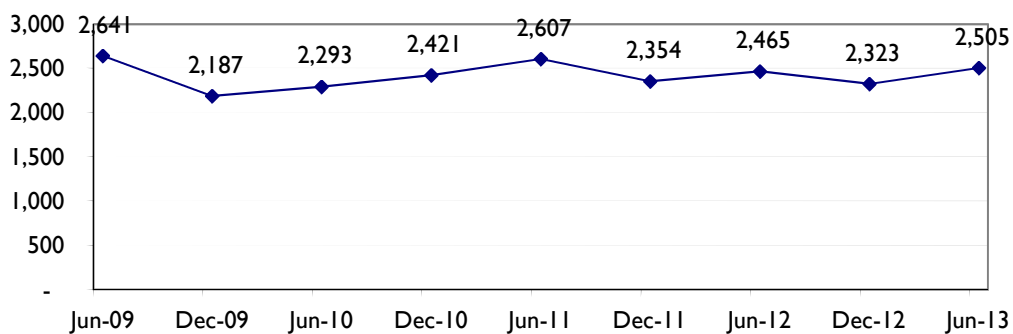
Active Caseload Flat Since June 2011



Active Caseload & Hours Growth Over Prior Year : Caseload Stable, but Hours Increasing

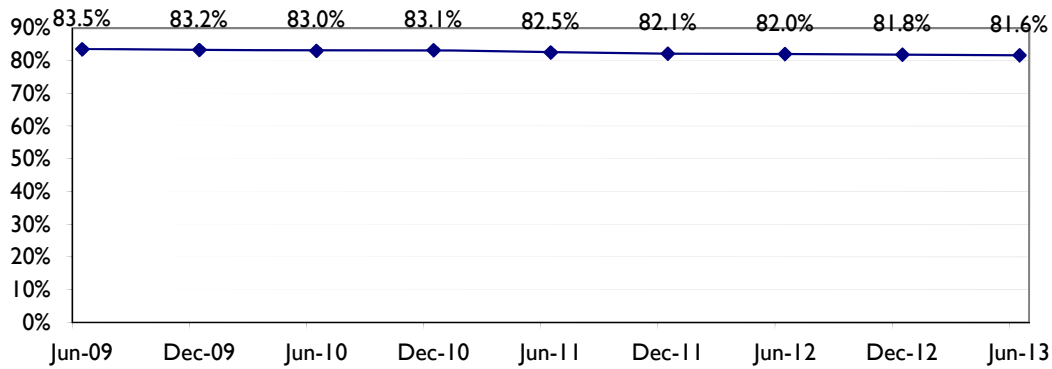


Total New Applications in Prior Six Months Fairly Flat Near 2,350

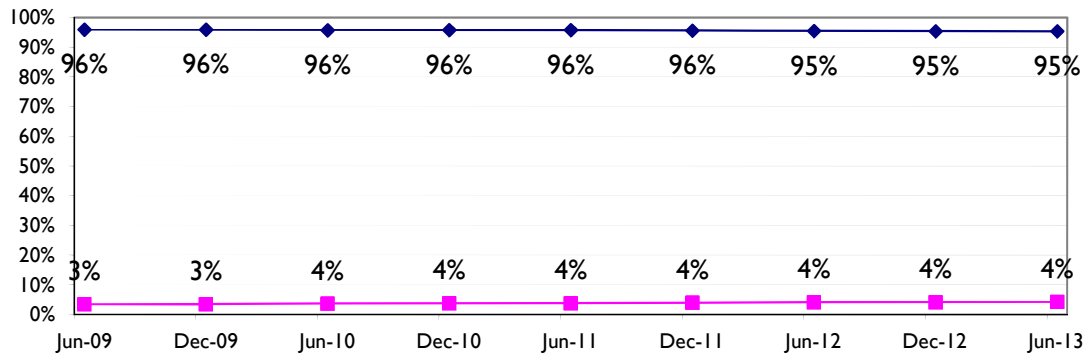


In Home Supportive Services Six-Month Update

Percent of Active Caseload on SSI Dropping Very Slightly



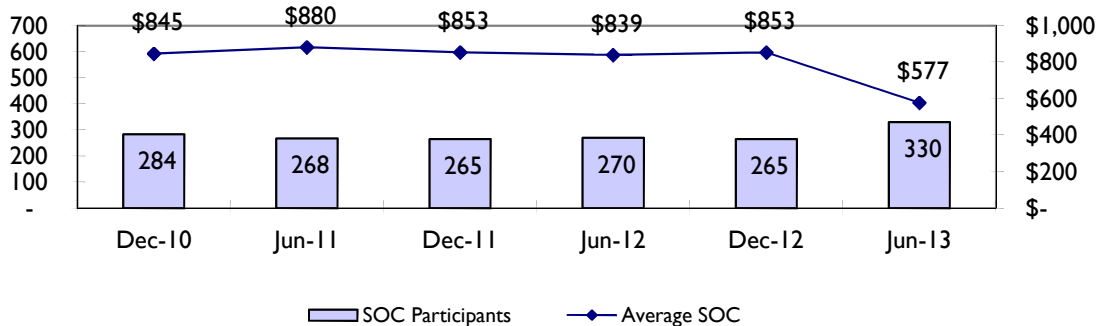
IP Mode and Contract Mode Steady at 96% and 4%



Mixed mode percentage not shown because percentage is so small.

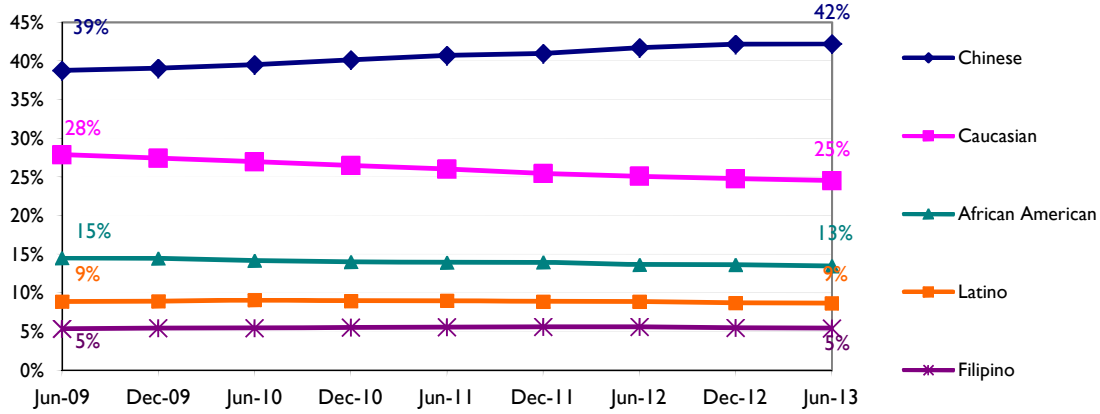
◆ Independent Provider ■ Contract

Number of Share of Cost Participants and Average Monthly Share of Cost Appears to Shift - May Reflect Data Issue

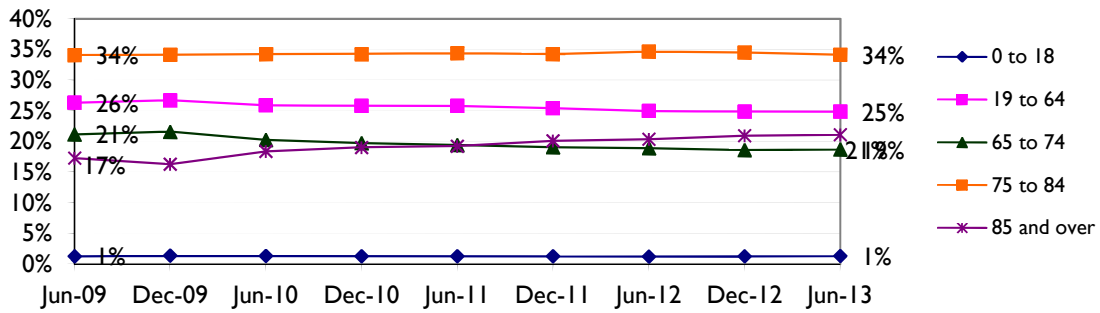


In Home Supportive Services Six-Month Update

Chinese Caseload Continues to Grow Slightly While Caucasian Caseload Shrinks

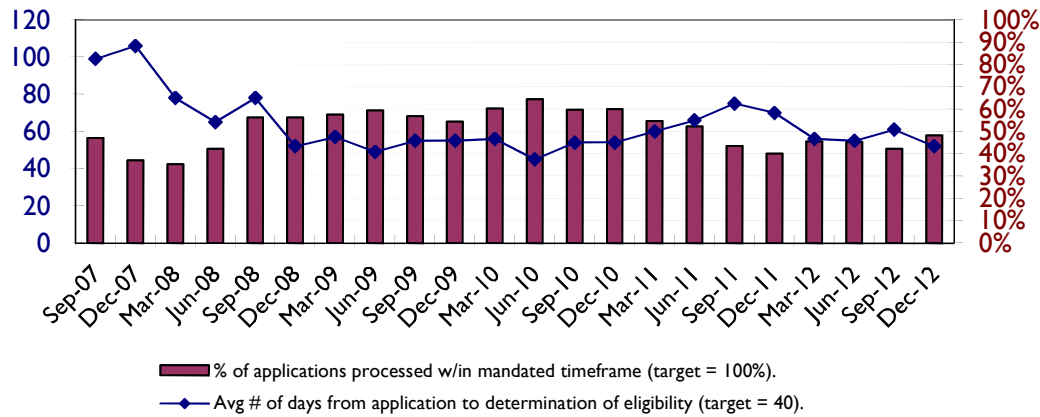


Age Distribution Remains Mostly Stable: Age 85+ Caseload Increasing Since December 2009

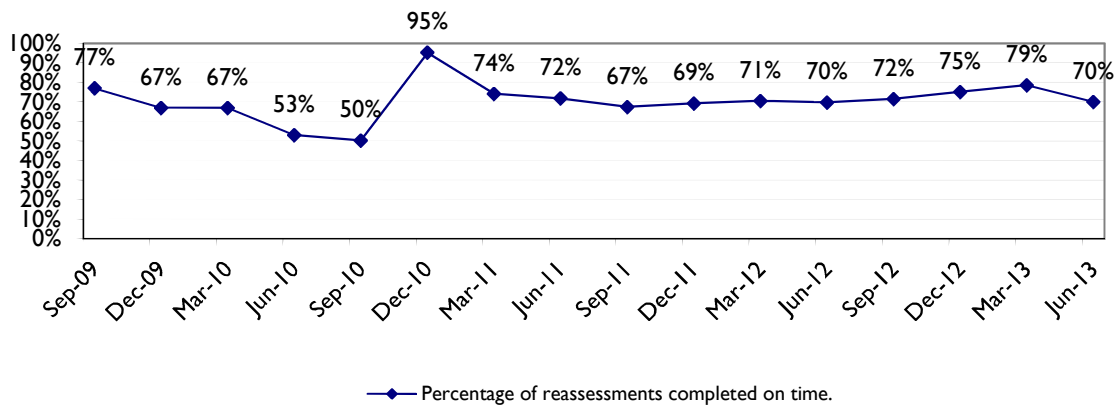


In Home Supportive Services Six-Month Update

Application processing performance measures currently unavailable due to CMIPS II database transition

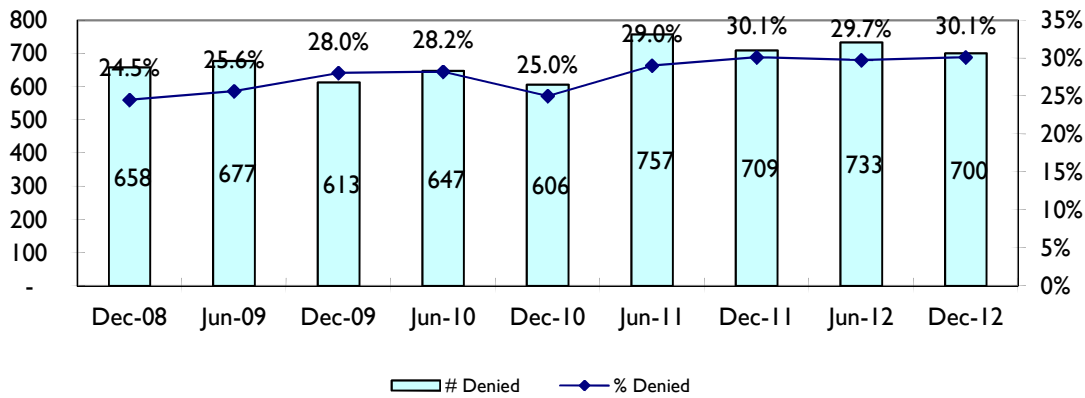


Percentage of Assessments Completed On Time Returns to 70% Level while Staff Adjusts to CMIPS II Database Conversion

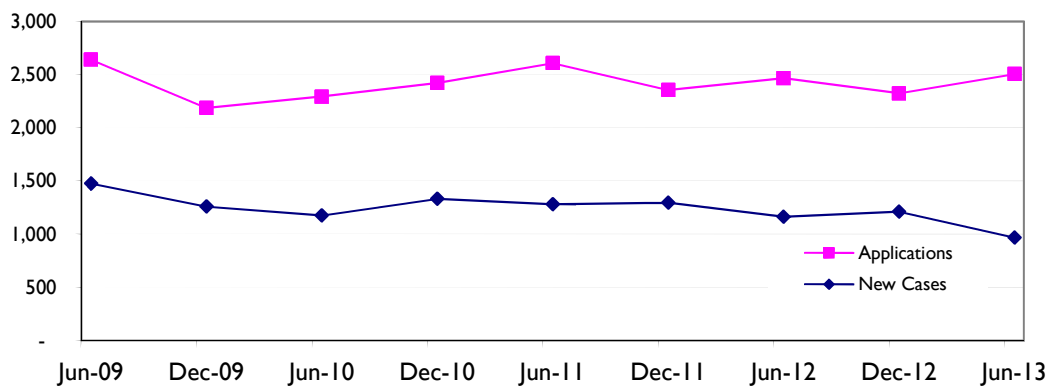


In Home Supportive Services Six-Month Update

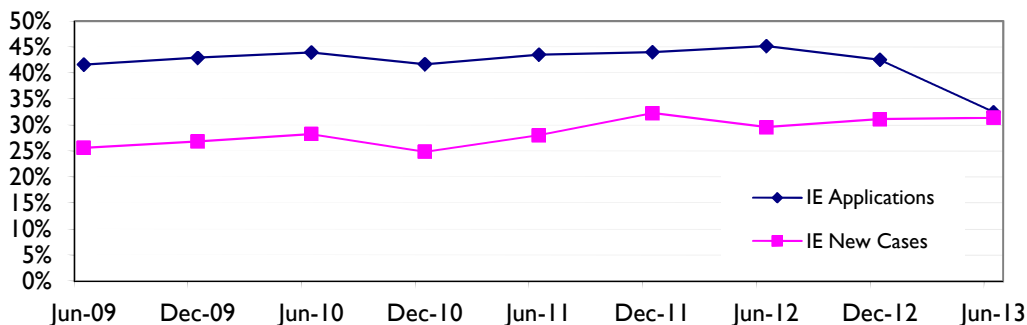
Percentage of Applicants Denied Remained High Compared to Prior Years in December 2012, June 2013 CMIPS II Data Not Charted do to Reliability Concerns



**Applications Remain Steady Near 2,500
New Cases Dropped, Perhaps Due to Transition to CMIPS II**



% of Applications and New Cases that were Income Eligible: IE Applicants Dropped - Perhaps Due to CMIPS II Transition



Income Eligible Applicants are those who do not receive SSI.

In Home Supportive Services Six-Month Update

Active Caseload*	Jun-13		Dec-12		Jun-12		Dec-11		Jun-11	
	#	%	#	%	#	%	#	%	#	%
Active Cases	21,608		21,705		21,591		21,580		21,611	
Change from Previous 6 Months	-97	-0.4%	114	0.5%	11	0.1%	-31	-0.1%	177	0.8%
Change from Previous Year	17	0.1%	125	0.6%	(20)	-0.1%	146	0.7%	345	1.6%
Change from 2 Years	(3)	0.0%	271	1.3%	325	1.5%	220	1.0%	371	1.7%
Change from 3 Years	342	1.6%	345	1.6%	351	1.7%	826	4.0%	1,565	7.8%
Gender										
Male	8,182	37.9%	8,209	37.8%	8,127	37.6%	8,180	37.9%	8,121	37.6%
Female	13,426	62.1%	13,496	62.2%	13,464	62.4%	13,400	62.1%	13,490	62.4%
Delivery Mode										
Independent Provider	20,602	95.3%	20,712	95.4%	20,612	95.5%	20,643	95.7%	20,706	95.8%
Contract	907	4.2%	893	4.1%	879	4.1%	849	3.9%	811	3.8%
Mixed	99	0.5%	100	0.5%	100	0.5%	88	0.4%	94	0.4%
Age (in years)										
0 thru 18	279	1.3%	265	1.2%	254	1.2%	265	1.2%	265	1.2%
19 thru 64	5,365	24.8%	5,391	24.8%	5,387	25.0%	5,484	25.4%	5,565	25.8%
65 thru 74	4,033	18.7%	4,029	18.6%	4,077	18.9%	4,112	19.1%	4,192	19.4%
75 thru 84	7,378	34.1%	7,484	34.5%	7,483	34.7%	7,385	34.2%	7,435	34.4%
85 and over	4,553	21.1%	4,536	20.9%	4,390	20.3%	4,334	20.1%	4,154	19.2%
Average	73		73		73		72		73	
Median	77		77		77		76		77	
Lives Alone	8,483	39.3%	8,853	40.8%	8,828	40.9%	8,787	40.7%	8,701	40.3%
SSI Status										
SSI	17,641	81.6%	17,762	81.8%	17,698	82.0%	17,709	82.1%	17,836	82.5%
Non-SSI	3,967	18.4%	3,943	18.2%	3,893	18.0%	3,871	17.9%	3,775	17.5%
Share of Cost										
Number of Individuals	330	1.5%	265	1.2%	270	1.3%	265	1.2%	268	1.2%
Mean Share of Cost/Individual	\$ 577.49		\$ 852.50		\$ 838.99		\$ 852.50		\$ 880.15	
Median Share of Cost/Individual	\$ 650.00		\$ 747.00		\$ 721.50		\$ 747.00		\$ 752.00	

*Active Caseload is based on a snapshot of the IHSS caseload at the end of the final month of the six-month period.

In Home Supportive Services Six-Month Update

Active Caseload	Jun-13		Dec-12		Jun-12		Dec-11		Jun-11	
	#	%	#	%	#	%	#	%	#	%
Ethnicity										
Chinese	9,123	42.2%	9,150	42.2%	9,004	41.7%	8,844	41.0%	8,799	40.7%
Caucasian	5,240	24.3%	5,325	24.5%	5,348	24.8%	5,416	25.1%	5,499	25.4%
African American	2,916	13.5%	2,960	13.6%	2,947	13.6%	3,019	14.0%	3,015	14.0%
Latino	1,876	8.7%	1,892	8.7%	1,918	8.9%	1,922	8.9%	1,946	9.0%
Filipino	1,175	5.4%	1,197	5.5%	1,215	5.6%	1,211	5.6%	1,208	5.6%
Vietnamese	414	1.9%	424	2.0%	413	1.9%	414	1.9%	402	1.9%
Korean	254	1.2%	257	1.2%	255	1.2%	255	1.2%	246	1.1%
Cambodian	44	0.2%	45	0.2%	46	0.2%	47	0.2%	53	0.2%
Other/Unknown	566	2.6%	455	2.1%	445	2.1%	452	2.1%	443	2.0%
Primary Language										
English	5,998	27.8%	6,058	27.9%	5,977	27.7%	6,128	28.4%	6,149	28.5%
Cantonese	7,873	36.4%	7,859	36.2%	7,735	35.8%	7,590	35.2%	7,528	34.8%
Russian	3,174	14.7%	3,243	14.9%	3,333	15.4%	3,368	15.6%	3,427	15.9%
Spanish	1,500	6.9%	1,509	7.0%	1,544	7.2%	1,529	7.1%	1,551	7.2%
Mandarin	791	3.7%	780	3.6%	767	3.6%	752	3.5%	753	3.5%
Tagalog	927	4.3%	934	4.3%	962	4.5%	931	4.3%	929	4.3%
Vietnamese	382	1.8%	393	1.8%	381	1.8%	377	1.7%	365	1.7%
All Other	937	4.3%	929	4.3%	892	4.1%	905	4.2%	909	4.2%
Zip Code/Neighborhood										
94102 Hayes Valley/Tenderloin/N. of Market	2,083	9.6%	2,000	9.2%	1,990	9.2%	1,963	9.1%	1,950	9.0%
94103 South of Market	1,820	8.4%	1,785	8.2%	1,825	8.5%	1,824	8.5%	1,846	8.5%
94107 Potrero Hill	693	3.2%	708	3.3%	713	3.3%	721	3.3%	751	3.5%
94108 Chinatown	866	4.0%	882	4.1%	873	4.0%	880	4.1%	880	4.1%
94109 Polk/Russian Hill	1,639	7.6%	1,662	7.7%	1,653	7.7%	1,636	7.6%	1,651	7.6%
94110 Inner Mission/Bernal Heights	1,301	6.0%	1,318	6.1%	1,322	6.1%	1,320	6.1%	1,352	6.3%
94112 Ingleside/Excelsior/Outer Mission	1,736	8.0%	1,758	8.1%	1,720	8.0%	1,706	7.9%	1,703	7.9%
94115 Western Addition/Japantown	1,556	7.2%	1,586	7.3%	1,600	7.4%	1,600	7.4%	1,600	7.4%
94116 Parkside	843	3.9%	844	3.9%	842	3.9%	831	3.9%	831	3.8%
94118 Inner Richmond	696	3.2%	718	3.3%	705	3.3%	693	3.2%	683	3.2%
94121 Outer Richmond	1,072	5.0%	1,112	5.1%	1,117	5.2%	1,147	5.3%	1,147	5.3%
94122 Sunset	980	4.5%	1,004	4.6%	997	4.6%	1,003	4.6%	1,005	4.7%
94124 Bayview/Hunters Point	1,362	6.3%	1,372	6.3%	1,343	6.2%	1,374	6.4%	1,356	6.3%
94132 Lake Merced/Stonestown	547	2.5%	544	2.5%	543	2.5%	554	2.6%	548	2.5%
94133 North Beach/Chinatown	1,553	7.2%	1,568	7.2%	1,571	7.3%	1,562	7.2%	1,540	7.1%
94134 Visitacion Valley/Sunnydale	1,377	6.4%	1,385	6.4%	1,345	6.2%	1,320	6.1%	1,297	6.0%
Others	1,484	6.9%	1,459	6.7%	1,432	6.6%	1,446	6.7%	1,471	6.8%

In Home Supportive Services Six-Month Update

New Applications**	Jun-13		Dec-12		Jun-12		Dec-11		Jun-11	
	#	%	#	%	#	%	#	%	#	%
Total New Applications	2,505		2,323		2,465		2,354		2,607	
Change from previous six months	182	7.8%	-142	-5.8%	111	4.7%	-253	-9.7%	186	7.7%
Change from previous year	40	1.6%	-31	-1.3%	-142	-5.4%	-67	-2.8%	314	13.7%
Application Status										
Record	1,322	52.8%	512	22.0%	638	25.9%	702	29.8%	635	24.4%
Eligible	806	32.2%	1,025	44.1%	1,000	40.6%	870	37.0%	1,126	43.2%
Interim	-	0.0%	4	0.2%	5	0.2%	3	0.1%	6	0.2%
Leave	8	0.3%	8	0.3%	7	0.3%	9	0.4%	6	0.2%
Terminated	69	2.8%	74	3.2%	82	3.3%	61	2.6%	77	3.0%
Denied (reasons below):	300	12.0%	700	30.1%	733	29.7%	709	30.1%	757	29.0%
Recipient Request			263	37.6%	325	44.3%	273	38.5%	325	42.9%
Residence			85	12.1%	70	9.5%	63	8.9%	77	10.2%
Income, Resources/Other Eligibility Factors			303	43.3%	272	37.1%	291	41.0%	304	40.2%
SSI/SSP Personal & Real Property (excess)			11	1.6%	15	2.0%	16	2.3%	14	1.8%
Other Reason			38	5.4%	51	7.0%	66	9.3%	37	4.9%
SSI Status**										
SSI	1,641	65.5%	1,335	57.5%	1,351	54.8%	1,318	56.0%	1,472	56.5%
Non-SSI	814	32.5%	988	42.5%	1,114	45.2%	1,036	44.0%	1,135	43.5%
Unknown	50	2.0%								
Zip Code/Neighborhood										
94102 Hayes Valley/Tenderloin/N. of Market	396	15.8%	305	13.1%	303	12.3%	299	12.7%	305	11.7%
94103 South of Market	257	10.3%	251	10.8%	260	10.5%	224	9.5%	274	10.5%
94107 Potrero Hill	53	2.1%	61	2.6%	44	1.8%	61	2.6%	64	2.5%
94108 Chinatown	63	2.5%	72	3.1%	71	2.9%	64	2.7%	61	2.3%
94109 Polk/Russian Hill	211	8.4%	206	8.9%	213	8.6%	189	8.0%	212	8.1%
94110 Inner Mission/Bernal Heights	193	7.7%	179	7.7%	182	7.4%	157	6.7%	191	7.3%
94112 Ingleside/Excelsior/Outer Mission	253	10.1%	188	8.1%	235	9.5%	252	10.7%	230	8.8%
94115 Western Addition/Japantown	99	4.0%	107	4.6%	98	4.0%	105	4.5%	118	4.5%
94116 Parkside	82	3.3%	72	3.1%	88	3.6%	79	3.4%	91	3.5%
94117 Haight-Ashbury	52	2.1%	39	1.7%	50	2.0%	46	2.0%	43	1.6%
94118 Inner Richmond	54	2.2%	37	1.6%	67	2.7%	42	1.8%	65	2.5%
94121 Outer Richmond	70	2.8%	70	3.0%	71	2.9%	66	2.8%	86	3.3%
94122 Sunset	94	3.8%	88	3.8%	92	3.7%	106	4.5%	99	3.8%
94124 Bayview/Hunters Point	186	7.4%	185	8.0%	192	7.8%	219	9.3%	239	9.2%
94132 Lake Merced/Stonestown	56	2.2%	55	2.4%	51	2.1%	62	2.6%	74	2.8%
94133 North Beach/Chinatown	118	4.7%	111	4.8%	135	5.5%	109	4.6%	126	4.8%
94134 Visitacion Valley/Sunnydale	154	6.1%	167	7.2%	167	6.8%	157	6.7%	172	6.6%
Others	114	4.6%	130	5.6%	146	5.9%	117	5.0%	157	6.0%

** New Applications include all applications with an application date during the six-month period (e.g., January 1 - June 30). SSI Status analysis added from March 2006 forward.

In Home Supportive Services Six-Month Update

New Cases***	Jun-13		Dec-12		Jun-12		Dec-11		Jun-11	
	#	%	#	%	#	%	#	%	#	%
Total New Cases	968		1,211		1,162		1,294		1,280	
Gender										
Male	465	48.0%	586	48.4%	518	44.6%	636	49.1%	572	44.7%
Female	503	52.0%	625	51.6%	644	55.4%	658	50.9%	708	55.3%
Delivery mode										
Independent Provider	862	89.0%	1,095	90.4%	1,070	92.1%	1,194	92.3%	1,189	92.9%
Contract	103	10.6%	110	9.1%	91	7.8%	98	7.6%	89	7.0%
Mixed	3	0.3%	6	0.5%	1	0.1%	2	0.2%	2	0.2%
Age (in years)										
0 thru 18	13	1.3%	23	1.9%	15	1.3%	14	1.1%	11	0.9%
19 thru 64	376	38.8%	448	37.0%	390	33.6%	452	34.9%	453	35.4%
65 thru 74	242	25.0%	298	24.6%	314	27.0%	318	24.6%	315	24.6%
75 thru 84	259	26.8%	323	26.7%	343	29.5%	381	29.4%	393	30.7%
85 and over	78	8.1%	119	9.8%	100	8.6%	129	10.0%	108	8.4%
Average	67		66		68		68		68	
Median	69		69		71		70		71	
Lives Alone***	430	44.4%	514	42.4%	487	41.9%	527	40.7%	511	39.9%
SSI Status										
SSI	664	68.6%	834	68.9%	818	70.4%	876	67.7%	921	72.0%
Non-SSI	304	31.4%	377	31.1%	344	29.6%	418	32.3%	359	28.0%
Share of Cost										
Number of Individuals	30	3.1%	16	1.3%	13	1.1%	16	1.2%	22	1.7%
Mean Share of Cost/Individual	\$ 441		\$ 862		\$ 1,007		\$ 734		\$ 600	
Median Share of Cost/Individual	\$ 542		\$ 741		\$ 927		\$ 671		\$ 547	
Ethnicity										
Chinese	364	37.6%	499	41.2%	489	42.1%	525	40.6%	510	39.8%
Caucasian	179	18.5%	237	19.6%	212	18.2%	225	17.4%	229	17.9%
African American	157	16.2%	215	17.8%	195	16.8%	220	17.0%	223	17.4%
Latin American/Hispanic	80	8.3%	114	9.4%	103	8.9%	141	10.9%	131	10.2%
Filipino	59	6.1%	74	6.1%	96	8.3%	95	7.3%	109	8.5%
Korean	11	1.1%	26	2.1%	17	1.5%	27	2.1%	23	1.8%
Vietnamese	6	0.6%	10	0.8%	12	1.0%	24	1.9%	20	1.6%
Cambodian	2	0.2%	36	3.0%	5	0.4%	1	0.1%	7	0.5%
Other/Unknown	110	11.4%	-	0.0%	33	2.8%	36	2.8%	28	2.2%

*** New Cases include all cases that currently have eligible or interim status and also have an application data during the six month period that begins one month prior to the report period (e.g., December 1 - May 31 for the January - June report).

In Home Supportive Services Six-Month Update

New Cases*	Jun-13		Dec-12		Jun-12		Dec-11		Jun-11	
	#	%	#	%	#	%	#	%	#	%
Primary Language										
English	369	38.1%	480	39.6%	403	34.7%	470	36.3%	454	35.5%
Cantonese	333	34.4%	428	35.3%	422	36.3%	459	35.5%	446	34.8%
Russian	23	2.4%	38	3.1%	45	3.9%	42	3.2%	50	3.9%
Spanish	60	6.2%	94	7.8%	95	8.2%	111	8.6%	111	8.7%
Mandarin	31	3.2%	45	3.7%	43	3.7%	58	4.5%	47	3.7%
Tagalog	48	5.0%	56	4.6%	87	7.5%	83	6.4%	101	7.9%
Vietnamese	7	0.7%	25	2.1%	18	1.5%	23	1.8%	23	1.8%
All Other	83	8.6%	45	3.7%	49	4.2%	48	3.7%	48	3.8%
Zip Code/Neighborhood										
94102 Hayes Valley/Tenderloin/N. of Market	162	16.7%	146	12.1%	148	12.7%	163	12.6%	132	10.3%
94103 South of Market	99	10.2%	117	9.7%	105	9.0%	128	9.9%	136	10.6%
94107 Potrero Hill	26	2.7%	24	2.0%	19	1.6%	35	2.7%	31	2.4%
94108 Chinatown	34	3.5%	52	4.3%	43	3.7%	42	3.2%	41	3.2%
94109 Polk/Russian Hill	81	8.4%	94	7.8%	101	8.7%	83	6.4%	92	7.2%
94110 Inner Mission/Bernal Heights	64	6.6%	84	6.9%	89	7.7%	73	5.6%	90	7.0%
94112 Ingleside/Excelsior/Outer Mission	95	9.8%	96	7.9%	118	10.2%	124	9.6%	111	8.7%
94115 Western Addition/Japantown	32	3.3%	53	4.4%	43	3.7%	59	4.6%	59	4.6%
94116 Parkside	34	3.5%	42	3.5%	46	4.0%	43	3.3%	53	4.1%
94118 Inner Richmond	24	2.5%	33	2.7%	28	2.4%	40	3.1%	35	2.7%
94121 Outer Richmond	25	2.6%	40	3.3%	35	3.0%	42	3.2%	45	3.5%
94122 Sunset	42	4.3%	60	5.0%	50	4.3%	60	4.6%	51	4.0%
94124 Bayview/Hunters Point	60	6.2%	95	7.8%	78	6.7%	109	8.4%	105	8.2%
94132 Lake Merced/Stonestown	19	2.0%	28	2.3%	21	1.8%	32	2.5%	38	3.0%
94133 North Beach/Chinatown	58	6.0%	79	6.5%	86	7.4%	85	6.6%	85	6.6%
94134 Visitacion Valley/Sunnydale	65	6.7%	83	6.9%	79	6.8%	105	8.1%	88	6.9%
Others	48	5.0%	85	7.0%	73	6.3%	71	5.5%	88	6.9%

In Home Supportive Services Six-Month Update

Services for Active Caseload	Jun-13		Dec-12		Jun-12		Dec-11		Jun-11	
	% of Active Cases	Avg Hrs Authorized (wkly)	% of Active Cases	Avg Hrs Authorized (wkly)	% of Active Cases	Avg Hrs Authorized (wkly)	% of Active Cases	Avg Hrs Authorized (wkly)	% of Active Cases	Avg Hrs Authorized (wkly)
Domestic Services (D&R)	99%	0.8	99%	0.8	99%	0.8	99%	0.8	99%	0.8
Routine Laundry (D&R)	99%	1.6	99%	1.6	99%	1.6	99%	1.6	99%	1.5
Grocery Shopping (D&R)	98%	0.6	98%	0.6	98%	0.6	99%	0.6	99%	0.6
Errands & Other Shopping (D&R)	97%	0.6	97%	0.6	97%	0.6	97%	0.6	97%	0.6
Meal Clean Up (D&R)	98%	2.0	98%	1.9	98%	1.9	98%	1.9	98%	1.9
Preparation of Meals (D&R)	98%	4.6	98%	4.5	98%	4.5	98%	4.5	98%	4.5
Accompaniment to Medical Appointment (D&R)	94%	0.9	94%	0.9	94%	0.9	94%	0.9	94%	1.0
Bathing, Oral Hygiene, Grooming	88%	2.4	88%	2.4	88%	2.4	88%	2.4	88%	2.4
Dressing	73%	1.6	73%	1.5	73%	1.5	72%	1.5	72%	1.5
Prosthesis Assistance	73%	0.9	73%	0.9	72%	0.9	72%	0.9	71%	0.9
Ambulation	66%	1.9	65%	1.9	65%	1.9	64%	1.9	63%	1.9
Moving In/Out of Bed	54%	1.4	53%	1.4	53%	1.4	53%	1.4	52%	1.4
Bowel & Bladder Care	49%	2.6	49%	2.5	48%	2.5	47%	2.5	47%	2.5
Repositioning/Rubbing	47%	1.8	47%	1.8	47%	1.8	46%	1.8	46%	1.8
Feeding	25%	2.8	24%	2.8	24%	2.8	24%	2.8	23%	2.8
Routine Bed Baths	9%	1.7	9%	1.8	9%	1.8	9%	1.7	8%	1.7
Paramedical Services	6%	3.8	6%	3.9	6%	3.8	5%	3.8	5%	3.7
Respiration	4%	1.2	4%	1.1	4%	1.2	4%	1.2	4%	1.2
Protective Supervision	2%	35.6	2%	35.9	2%	35.4	2%	35.2	2%	34.9
Menstrual Care	2%	0.6	2%	0.6	2%	0.6	2%	0.6	2%	0.6
Accompaniment to Alternative Resources (D&R)	1%	2.2	1%	2.3	1%	2.3	1%	2.1	1%	2.0
Heavy Cleaning	0%	13.8	0%	22.3	0%	12.5	0%	23.9	0%	11.5
Total Weekly Authorized Hours	449,126		445,550		442,388		440,252		438,200	
Average Weekly Hours per Recipient	20.8		20.5		20.5		20.4		20.3	
Total Weekly Auth Domestic & Related Hours	234,665		233,818		232,483		232,487	53%	232,532	53%
Average Monthly Cost/Case - SF	unavailable due to CMIPS II implementation				\$ 1,090.67		\$ 1,036.86		\$ 1,081.18	
Average Monthly Cost/Case - CA	unavailable due to CMIPS II implementation				\$ 932.16		\$ 910.99		\$ 899.50	

D&R = Domestic & Related services

In Home Supportive Services Six-Month Update

Independent Providers	Jun-13		Dec-12		Jun-12		Dec-11		Jun-11	
	#	%	#	%	#	%	#	%	#	%
Total Providers with an Active Consumer	18,593		18,374		18,181		18,193		17,931	
Change from previous six months	219	1.2%	193	1.1%	-12	-0.1%	262	1.4%	228	1.3%
Change from previous year	412	2.2%	181	1.0%	250	1.4%	490	2.7%	480	2.7%
Newly Enrolled Providers	2,007		1,925		1,925		1,631		2,276	
Providers with at least one relative consumer	12,289	66.1%	11,707	63.7%	11,660	64.1%	11,654	64.1%	11,551	64.4%
Providers serving more than one consumer	3,378	18.2%	3,495	19.0%	3,518	19.3%	3,527	19.4%	3,532	19.7%
Relationship to Consumer (providers may have more than one consumer)										
Relative - Spouse	512	2.8%	496	2.7%	507	2.8%	503	2.8%	478	2.7%
Relative - Parent	766	4.1%	757	4.1%	739	4.1%	723	4.0%	705	3.9%
Relative - Child	7,010	37.7%	7,004	38.1%	6,905	38.0%	6,870	37.8%	6,723	37.5%
Relative - Other	3,757	20.2%	3,788	20.6%	3,831	21.1%	3,908	21.5%	3,989	22.2%
Non-Relative - Friend	1,577	8.5%	1,630	8.9%	1,678	9.2%	1,784	9.8%	1,939	10.8%
Non-Relative - Neighbor	41	0.2%	44	0.2%	54	0.3%	53	0.3%	52	0.3%
Non-Relative - Landlord	2	0.0%	4	0.0%	4	0.0%	6	0.0%	5	0.0%
Non-Relative - Housemate	34	0.2%	34	0.2%	33	0.2%	36	0.2%	37	0.2%
Non-Relative - Live-in Provider	28	0.2%	27	0.1%	27	0.1%	25	0.1%	32	0.2%
Non-Relative - Home Health Agency	0	32.5%	2	0.0%	2	0.0%	2	0.0%	3	0.0%
Non-Relative - Other Business	0	0.0%	12	0.1%	14	0.1%	14	0.1%	15	0.1%
Non-Relative - Other	6,045	#REF!	5,918	32.2%	5,741	31.6%	5,660	31.1%	5,355	29.9%
Ethnicity (providers with more than one consumer may have list more than one ethnicity)										
Chinese	7,398	40%	7,617	41%	7,492	41%	7,384	41%	7,335	41%
Caucasian	3,406	18%	3,557	19%	3,618	20%	3,740	21%	3,812	21%
African American	1,222	7%	1,387	8%	1,417	8%	1,524	8%	1,563	9%
Latino	1,398	8%	1,490	8%	1,474	8%	1,519	8%	1,542	9%
Filipino	821	4%	885	5%	876	5%	873	5%	879	5%
Vietnamese	346	2%	364	2%	364	2%	376	2%	358	2%
Korean	141	1%	149	1%	146	1%	146	1%	149	1%
Cambodian	19	0%	20	0%	19	0%	22	0%	28	0%
Other/Unknown	3,842	21%	3,899	21%	3,776	21%	3,562	20%	3,163	18%